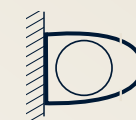
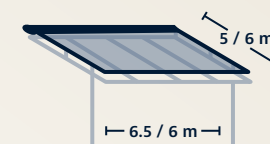


CONSERVATORY AWNINGS  
**WGM TOP**



Oval awning



On-glass awning  
max. dimensions

# CONSERVATORY AWNINGS: WGM TOP

## FLEXIBLE PROTECTION ON THE GLASS

WGM Top is an external conservatory awning which is installed above the roof. It is positioned where heat arises: even before the sunlight reaches the glass. Almost independently of the given conditions, the WGM Top can be combined with almost any roof construction.

### WGM Top: technical data

Technology	WGM Top
Max. distance between centre lines 1 panel (width: distance between centre lines + 61 mm)	6.5 / 6 m
Max. projection	5 / 6 m
Max. fabric area	36 m <sup>2</sup>
Cassette size (width x height)	32.3 x 16.6 cm
Motor drive	Standard
Crank drive	-
Gradient	0°* – 45°
Tested up to wind force 6 on the Beaufort scale Meets wind resistance class 3** and rain class 2 (56 l/h/m <sup>2</sup> rainfall quantity) according to DIN 13561	

\* Please note that the WGM Top may not be used in rain. Even if a rain sensor is used, water can accumulate and may destroy the awning. Due to the low inclination or horizontal installation, the fabric may become wet even when it is retracted, due to driving rain. There is no risk of water accumulation (pooling) as of a pitch of 14°.

\*\* The wind resistance class applies at a support bracket height of max. 220 mm (fixed support bracket) or 265 mm (adjustable support bracket).

More information is available under:  
[weinor.com/wgmtop](http://weinor.com/wgmtop)

### Highlights / Equipment



WGM Top Stretch or OptiStretch – tensioned on 2 or 4 sides



BiSens sensors – automatic sun, wind and rain protection



Top support brackets – precisely fitting solution for all installation situations

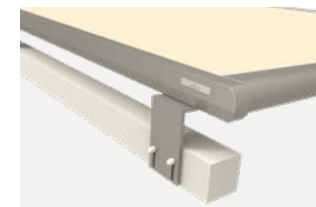
### Installation alternatives



Wall connection roof profile



Side wall profile



Lateral long-angle installation

A wide range of frame colours and fabrics – for an awning which matches your architecture and style perfectly.  
More information is available under: [weinor.com/architecture-mood](http://weinor.com/architecture-mood)

### Individual control packages

The right solution for every operation request: The controllers for weinor awnings and accessories provide the most varied of options – no matter whether cable, remote control or Smart Home, via hand transmitter, smartphone or automatic weather control.

More info:  
[weinor.com/control](http://weinor.com/control)



BiConnect



Basic \*\*



Comfort \*\*\*



Smart \*\*\*\*